

WARD
SEA KING

**OUTBOARD
MOTOR**

PARTS CATALOG

MW-83

1974

15

B.I.A. CERTIFIED BRAKE H.P. AT 5100 R.P.M.

**MODEL
VWB-52015**

Printed in U.S.A.

9/73

SEA KING—SOLD EXCLUSIVELY BY **MONTGOMERY WARD**

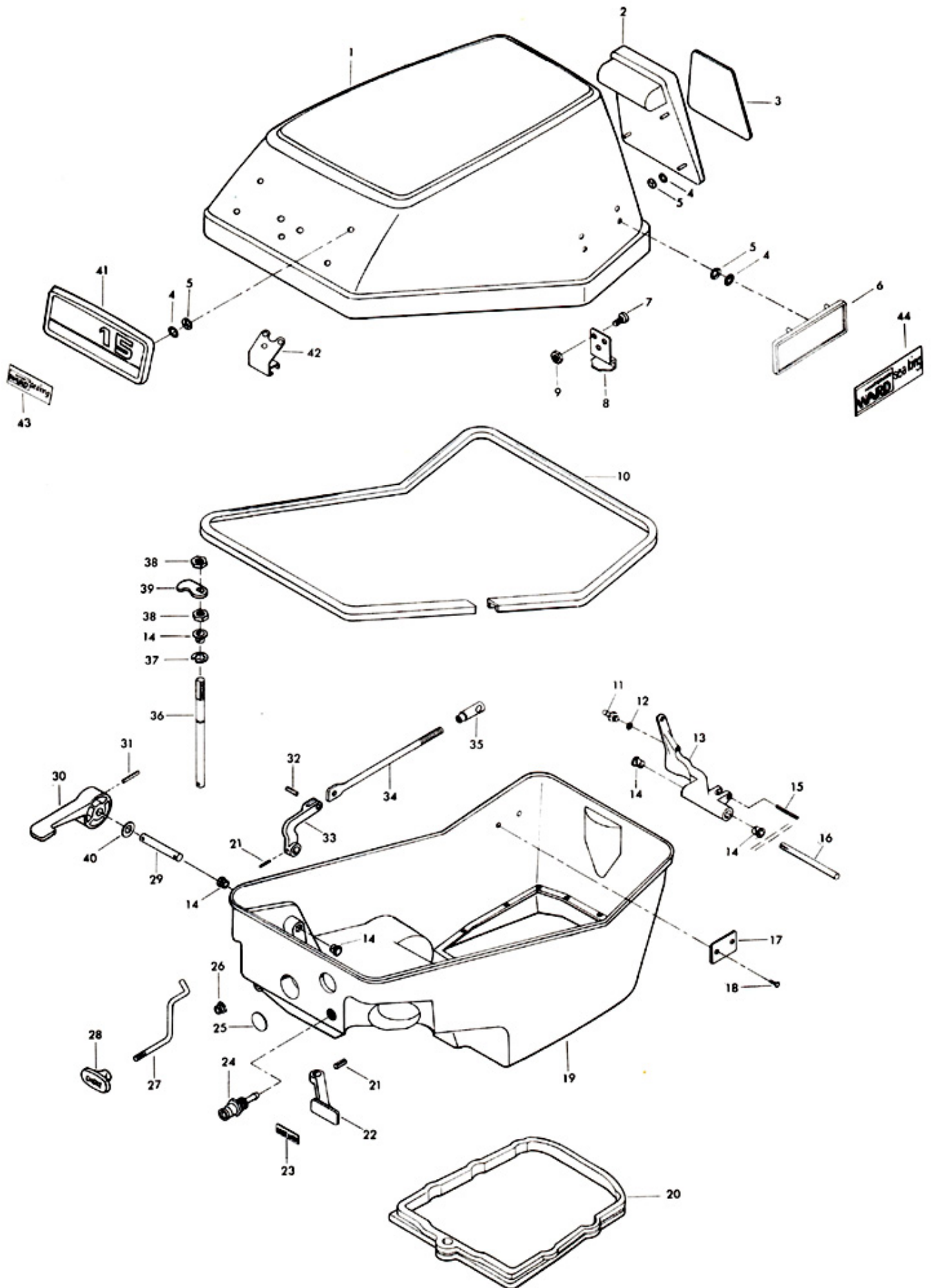
Engine Cover and Support Plate

ILLUS. NO.	PART NO.	QTY.	DESCRIPTION
1	S447712	1	Cover, engine w/bracket and retainer
2	392269	1	Handle, tilt
3	496180	1	Trim, engine cover, rear
4	85735	17	Seal, medallion
5	1753	17	Fastener
6	446392	2	Plate, side
7	1475	6	Fill hd screw, 10 - 24 x 1/2
8	A392480	1	Retainer, engine cover w/screws and nuts
9	7011	6	Elastic stop nut, 10 - 24
10	392756	1	Packing, support plate
11	98273	1	Stud, gear shift rod connector
12	8058	1	Internal tooth lockwasher
13	286876	1	Lever, gear shift
14	307818	6	Bearing
15	8542	1	Spring pin
16	286871	1	Pin, gear shift lever
17	A197395-3	1	Plate, identification w/screws
18	1293	2	Drive screw
19	A392038	1	Plate, support
20	286989-1	1	Seal, support plate
21	8547	2	Spring pin
22	392469	1	Handle, cover latch
23	392585	1	Decal, cover latch
24	197767-1	1	Bushing, fuel line
25	A343226	1	Plug
26	197319	1	Bearing, choke rod
27	392503	1	Rod, choke
28	392547	1	Knob, choke
29	392417	1	Shaft, gear shift handle
30	392614	1	Handle, gear shift
31	8549	1	Spring pin
32	8552	1	Spring pin
33	392619	1	Lever, shift handle shaft
34	392611	1	Rod, gear shift
35	286685	1	Connector, gear shift rod
36	392763	1	Shaft, cover latch
37	73741-1	1	Retaining ring
38	1518	2	Jam nut, 5/16 - 18
39	392777	1	Cam, cover latch
40	8049	1	Bowed washer
41	496711	1	Plate, front
42	A392774	1	Bracket, cover latch w/screws and nuts
43	A447512	1	Insert, plate front
44	A446892	2	Insert, side plate
	392400	1	Decal, gear shift (not shown)

NOTE

To obtain identification plate, order part number A197395-3. Order for identification plate must be accompanied by a notarized statement from the dealer, customer and statement from a law enforcement agency verifying that the plate is lost or damaged beyond repair. This statement must also include name and address of owner and model and serial number of motor.

ENGINE COVER AND SUPPORT PLATE



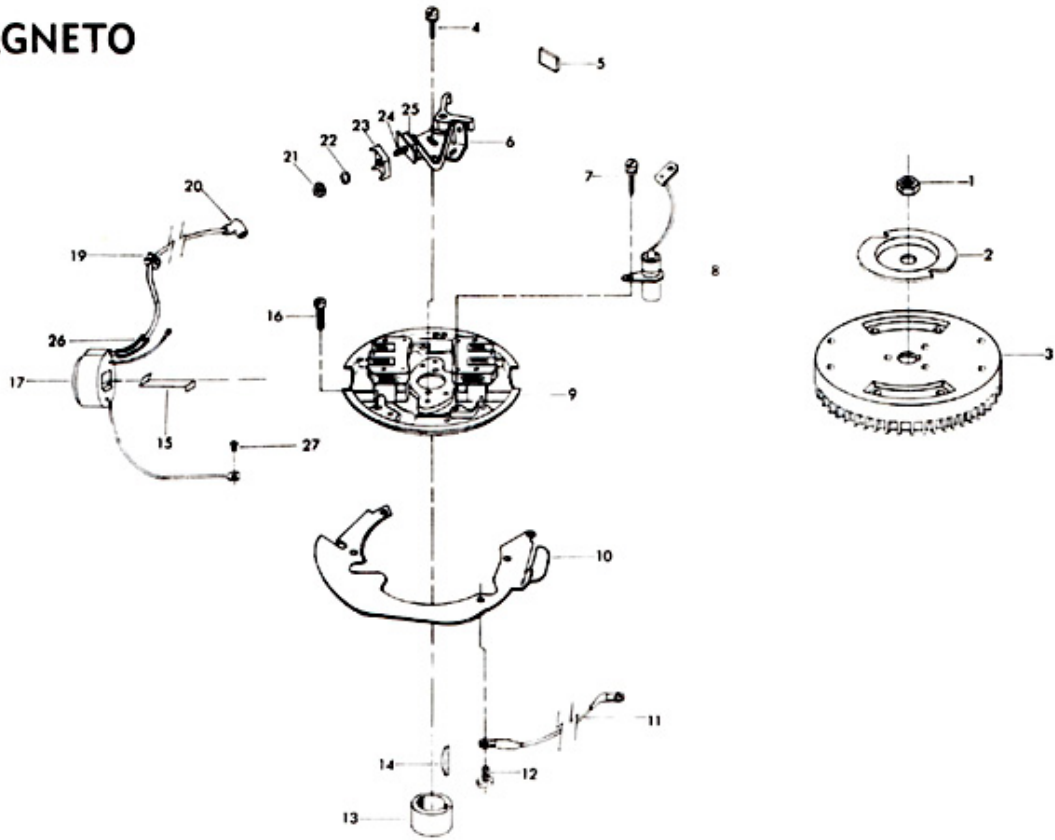
Magneto

ILLUS. NO.	PART NO.	QTY.	DESCRIPTION
1	1809	1	Hex nut, 1/2 - 20
2	901456-1	1	Emergency starter collar
3	302097	1	Flywheel
4	12170	4	Contact screw w/lockwasher
5	12228	1	Cam wiper felt
6	12153	2	Breaker point set
7	12083	2	Condenser screw w/lockwasher
8	12181-1	2	Condenser
9	12343	1	Stator plate w/laminations
10	286192	1	Throttle cam
11	289664	1	Wire, stator ground
12	1075	4	Fill hd screw, 10 - 24 x 1/2
13	217002	1	Magneto breaker cam
14	54498	1	Magneto key
15	12146	2	Coil wedge spring
16	1090	4	Fill hd screw w/lockwasher, 10 - 24 x 9/16
17	A12231	2	Coil w/lead wire
19	12088	4	Grommet
20	K-750-1	2	Sparkie w/spring
21	12127	2	Stud nut
22	8055	2	Lockwasher
23	12128	2	Insulator, outside
24	12142	2	Connection stud
25	12129	2	Insulator, inside
26	12141	1	Sleeve
27	12114	2	Coil ground terminal screw
	12091	1	Lead wire marker, top (not shown)
		1	Magneto complete, order component parts
		1	Stator plate complete, order component parts

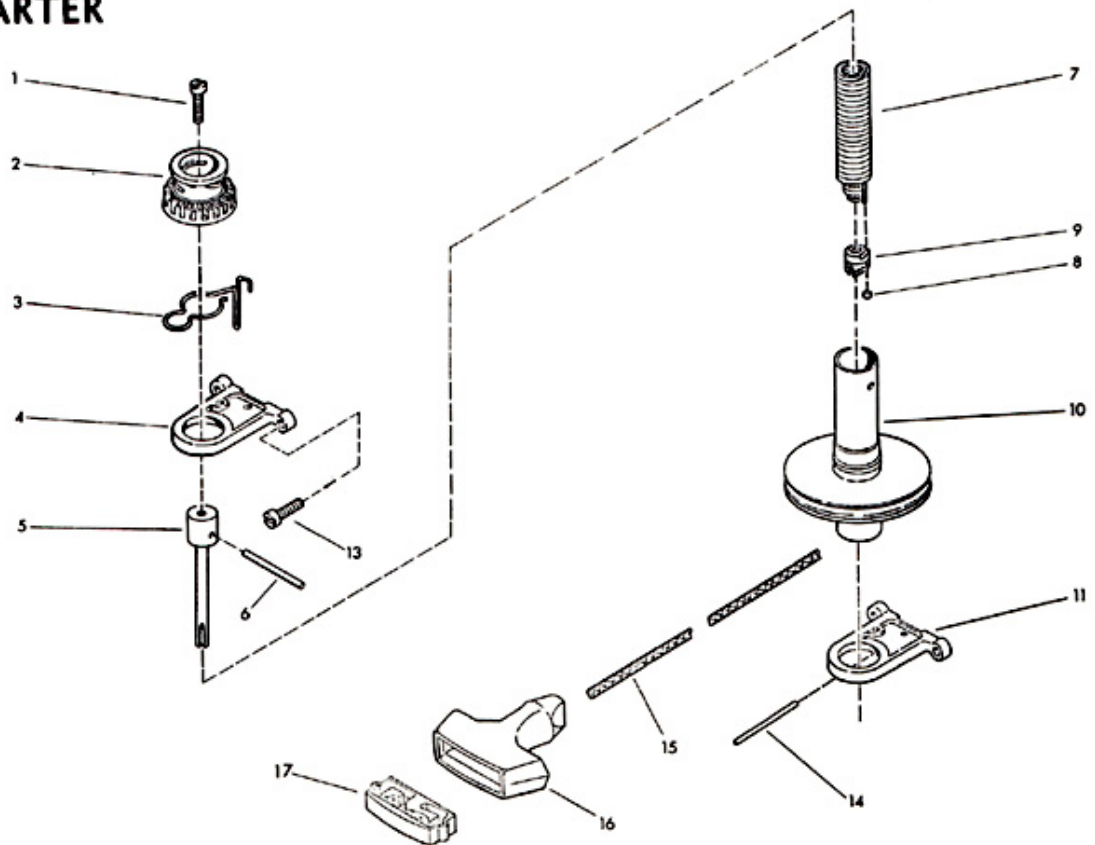
Starter

ILLUS. NO.	PART NO.	QTY.	DESCRIPTION
1	1089	1	Fill hd screw, 10 - 24 x 9/16
2	456674	1	Gear, starter pinion
3	286424	1	Starter pinion spring
4	K317427	1	Bracket, starter upper
5	286710	1	Arbor, starter spring
6	40425	1	Starter pinion pin
7	A286970	1	Starter rewind spring w/end and retainer
8	286930	1	End, starter spring
9	286737-1	1	Retainer, starter rewind spring
10	2A459239	1	Starter spool w/shaft
11	K317427	1	Bracket, starter lower w/spring pin
13	1201	4	Fill hd screw, 1/4 - 20 x 3/4
14	1875	1	Spring pin, starter bracket
15	409232	1	Starter rope
16	286132	1	Handle, starter rope
17	K286817-1	1	Retainer, starter rope handle

MAGNETO



STARTER



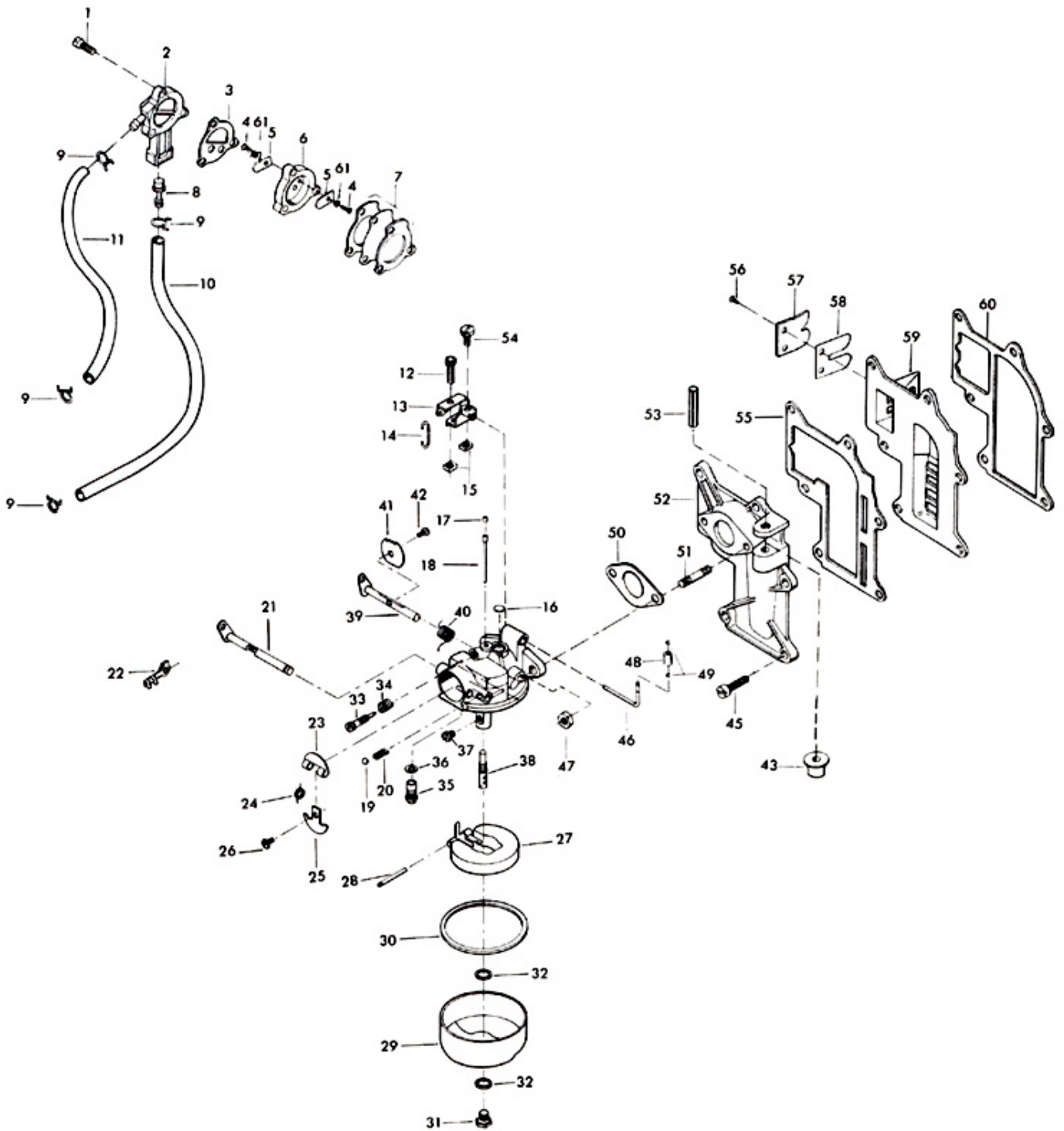
Fuel System

ILLUS. NO.	PART NO.	QTY.	DESCRIPTION	ILLUS. NO.	PART NO.	QTY.	DESCRIPTION
1	1069	3	Fill hd screw, 10 - 24 x 1 1/16	35	* 010790	1	Inlet needle, seat and gasket
2	901746-1	1	Fuel pump cover	36	010165	1	Inlet seat gasket
3	24748	1	Gasket, fuel pump	37	* 011722	1	Main fuel jet (.055)
4	1286	2	Pan hd screw, 4 - 40 x 3/16	38	* 015525	1	Main nozzle
5	18160-1	2	Reed fuel pump	39	015757	1	Throttle shaft and lever
6	A24757-3	1	Fuel pump reed plate w/reeds and screws	40	* 015526	1	Throttle shaft return spring
7	2A24747-1	1	Fuel pump diaphragm w/gaskets	41	016878	1	Throttle shutter
8	901811	1	Fuel pump filter	42	* 010280	1	Throttle shutter retaining screw and lockwasher
9	2706772	4	Hose clamp	43	286435-3	1	Pulley starter rope
10	40253	1	Fuel line	45	1201	6	Fill hd screw, 1/4 - 20 x 3/4
11	A24754-1	1	Fuel line w/clamps	46	286316	1	Throttle cam follower
12	1834	1	Fill hd screw, 10 - 24 x 7/8	47	1490	2	Hex nut, 1/4 - 20
13	A286190-1	1	Arm, carburetor adjusting	48	78318	1	Roller, throttle cam follower
14	66193	1	Throttle link	49	78410	2	Retainer
15	1365	2	Square nut, 10 - 24	50	18906	1	Carburetor gasket
16	* 02531	1	Body channel welch plug	51	2788004	2	Stud, carburetor
17	* 010588	1	Body channel cup plug	52	2A424167	1	Manifold w/studs
18	015522	1	Bypass tube	53	1876	1	Spring pin
19	04784	1	Choke friction ball	54	1558	1	Hex slot hd screw, 10 - 24 x 3/8
20	08805	1	Choke friction spring	55	424168	1	Gasket, manifold
21	015736	1	Choke shaft and lever	56	1298	8	Rd hd screw, 6 - 32 x 1/4
22	341384	1	Retainer, choke rod	57	424161	4	Reed stop
23	015368	1	Choke relief valve	58	31160-1	4	Reed
24	016161	1	Choke relief valve spring	59	A424158	1	Reed plate w/reeds, stops and screws
25	015367	1	Choke shutter	60	286159	1	Gasket reed plate
26	010280	1	Choke shutter retainer screw and lockwasher	61	8003	2	Plain washer
27	013554	1	Float		472061	1	Carburetor complete CO-10A
28	* 013944	1	Float lever pin		* 10006	1	Gasket set, carburetor (not shown)
29	015366	1	Fuel bowl		10007	1	Repair parts kit, carburetor (not shown)
30	* 015623	1	Fuel bowl gasket				Asterisk (*) indicates contents of Repair Parts Kit.
31	013945	1	Fuel bowl retaining screw				
32	02510	2	Fuel bowl retaining screw gasket				
33	* 015520	1	Idle mixture screw				
34	* 011103	1	Idle mixture screw spring				

OPTIONAL SIZE MAIN FUEL JETS (Use Only At Altitudes Indicated)

	<u>Sea Level-3000 Ft.</u>	<u>3000-6000 Ft.</u>	<u>6000 and Up</u>
Size	.055	.053	.051
Part No.	011722	011765	011764

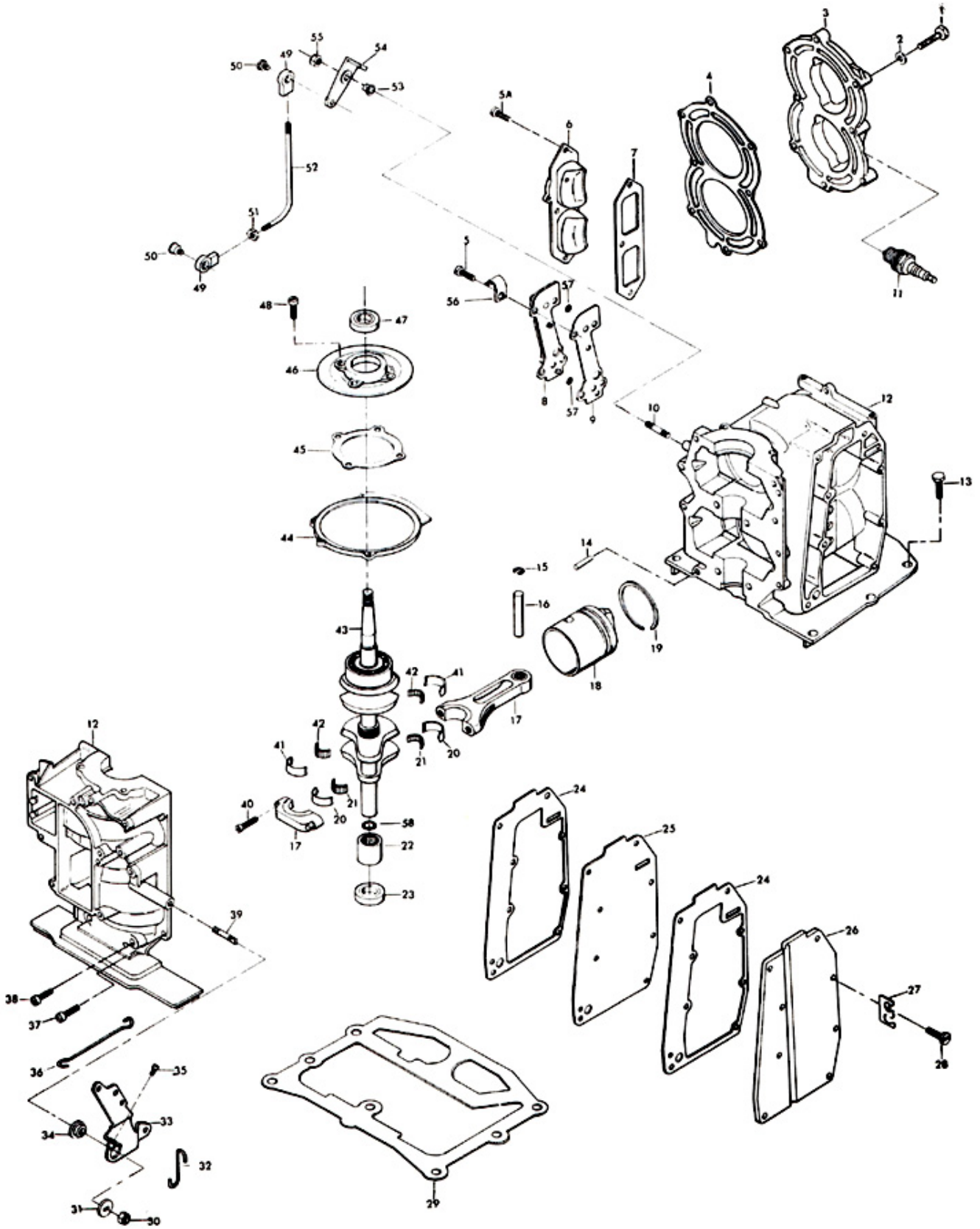
FUEL SYSTEM



Power Head

ILLUS. NO.	PART NO.	QTY.	DESCRIPTION	ILLUS. NO.	PART NO.	QTY.	DESCRIPTION
1	901938-1	8	Screw, cylinder head	36	286509	1	Link, throttle cam
2	8025	8	Plain washer	37	1107	8	Fill hd screw, 1/4 - 20 x 3/4
3	286518	1	Head, cylinder	38	1798	4	Fill hd screw, 5/16 - 18 x 1 1/4
4	286529-3	1	Gasket, cylinder head	39	286440	1	Stud, magneto control lever
5	1239	4	Hex hd screw, 1/4 - 20 x 5/8	40	286634	4	Screw, connecting rod
5A	1502	3	Hex cap screw, 1/4 - 20 x 5/8	41	A286655	1	Main bearing liner set (2 per set)
6	286222	1	Cover transfer port	42	286571	1	Roller set, main bearing (26 per set)
7	286223	1	Gasket, transfer port cover	43	A472018	1	Crankshaft w/upper main bearing. Upper main bearing not sold separately. Contact area service manager for authorization to return crankshaft for bearing replacement.
8	A429471	1	Cover, cylinder drain w/check valves and screens	44	73082	1	Ring, magneto stator
9	429472	1	Gasket, cylinder drain cover	45	286277	1	Gasket, crankshaft bearing cage
10	28004	1	Stud, interlock lever	46	A286144	1	Cage, crankshaft bearing w/seal
11	S174227	2	Plug, spark - L-4-J	47	346146	1	Seal, crankshaft upper
12	A472010	1	Cylinder w/crankcase cover, dowel pins, screws and studs	48	1111	4	Fill hd screw, 1/4 - 20 x 7/8
13	1823	6	Hex cap screw, 5/16 - 18 x 1	49	84035-2	2	Bearing, interlock lever
14	8559	2	Dowel pin	50	84026	2	Swivel, interlock rod bearing
15	31410	4	Retaining ring, piston pin	51	1339	1	Hex nut, 10 - 24
16	174017	2	Pin, piston	52	286531	1	Rod, interlock
17	2A286016	2	Rod, connecting w/cap and screws	53	197813	1	Bearing, interlock lever
18	472015	2	Piston	54	286977-1	1	Lever, interlock
19	A472260	2	Piston ring set (2 per set)	55	7008	1	Stop nut, 1/4 - 20
20	A286229	2	Connecting rod liner set (2 per set)	56	286772-1	1	Hose clamp
21	286228	2	Roller set, connecting rod (26 per set)	57	429811	2	Screen
22	343014	1	Bearing, crankshaft lower main	58	461342	1	Seal Driveshaft spline
23	141118	1	Seal, crankshaft lower		G-1005-1	1	Gasket Set (not shown)
24	286154	2	Gasket, exhaust cover		K-737	1	Engine touch-up paint spray bomb
25	286151	1	Plate, exhaust		K-748	1	Engine touch-up paint spray bomb
26	286152	1	Cover, exhaust				Frost White Flat
27	901834	1	Clip, lead wire				Gold Enamel
28	1240	8	Hex slot hd screw, 1/4 - 20 x 7/8				
29	286279-2	1	Gasket, cylinder mounting				
30	1803	1	Stop nut, 5/16 - 24				
31	286282	1	Washer				
32	286445	1	Link, magneto control rod				
33	A286081-1	1	Lever, magneto control				
34	183813	1	Bearing, magneto control lever				
35	1052	1	Fill hd screw, 1/4 - 20 x 1				

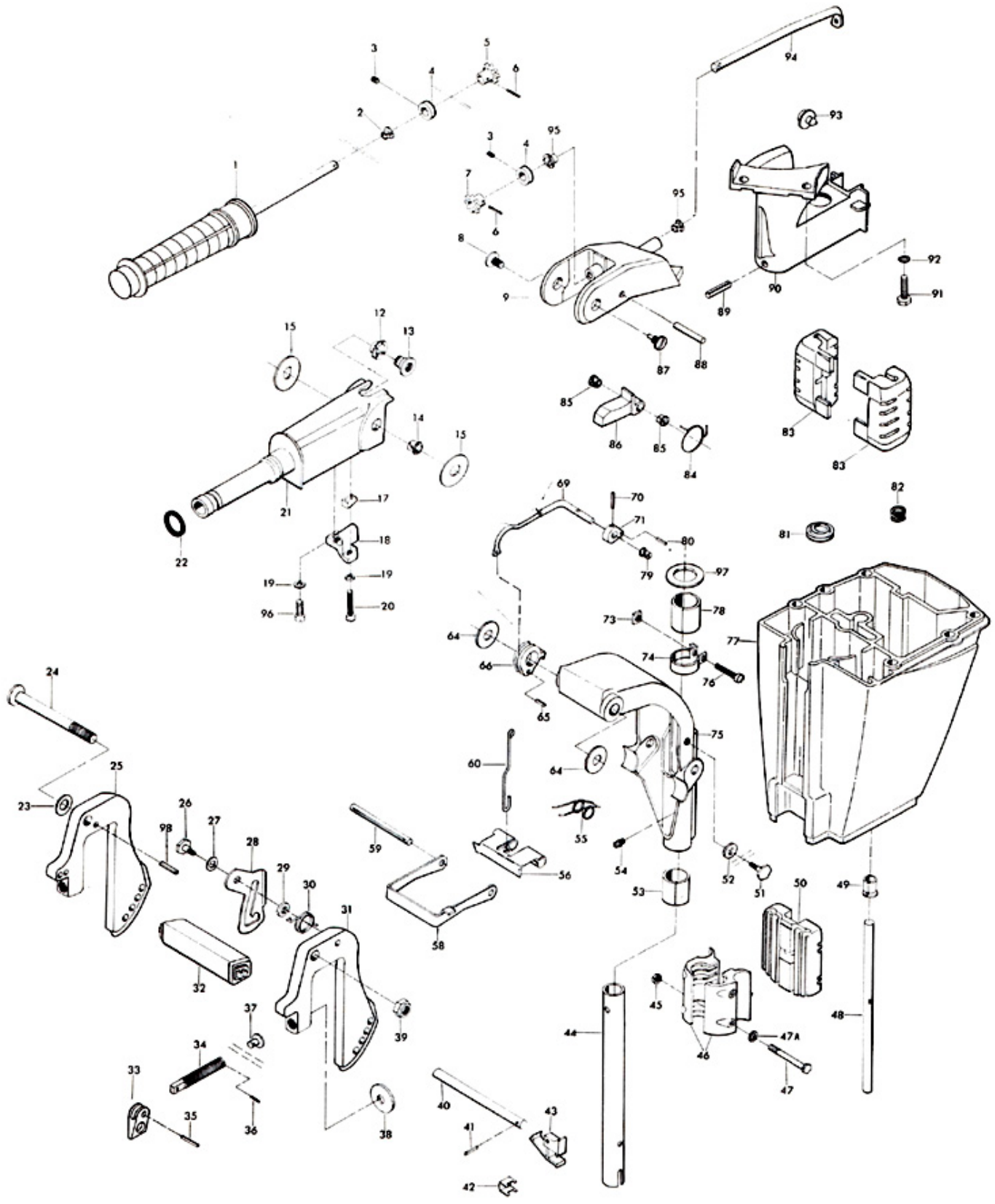
POWER HEAD



Motor Leg

ILLUS. NO.	PART NO.	QTY.	DESCRIPTION	ILLUS. NO.	PART NO.	QTY.	DESCRIPTION
1	A447137	1	Grip, steering handle w/shaft	49	286914	1	Sleeve water line
2	85610	1	Bearing	50	286346	1	Shock mount lower
3	1859	2	Hex socket headless set screw	51	286422-1	1	Tilt lock pivot
4	A343178	2	Retainer	52	286451	1	Spacer, tilt lock
5	S487815	1	Gear, steering handle shaft	53	286169	1	Bearing, swivel bracket
6	1978	2	Spring pin	54	213274	1	Grease fitting
7	S487815	1	Gear, magneto control shaft	55	286300	1	Spring, reverse lock
8	1799	1	Truss hd screw, 5/16 - 18 x 5/8	56	286349	1	Reverse lock
9	392078	1	Steering handle bracket	58	286433	1	Bracket shallow water drive
12	286818	1	Bearing	59	1806	1	Groove pin
13	286224	1	Insert, steering handle pivot	60	A341510	1	Link, reverse lock
14	197813	1	Bearing	64	286286-1	2	Washer, stern bracket
15	286220	2	Washer, steering handle	65	1794	1	Spring pin
17	341693	1	Wedge, steering handle	66	286827	1	Reverse lock release lever
18	341816	1	Bearing, steering handle	69	A387742	1	Lever, reverse lock intermediate
19	8058	2	Int. tooth lockwasher	70	8538	1	Spring pin
20	1829	1	Fill hd screw, 10 - 24 x 7/8	71	286364	1	Lever, reverse lock
21	392079	1	Steering handle	73	1608	1	Square nut, 1/4 - 20
22	53795-1	1	Seal, steering handle grip dampener (large)	74	286573-1	1	Clamp, steering friction
23	8039	1	Plain washer	75	A286072-1	1	Swivel bracket w/grease fitting
24	286037	1	Stern bracket pivot bolt	76	1820	1	Fill hd screw, 1/4 - 20 x 1 3/8
25	S286032	1	Stern bracket stbd. w/clamp screw and foot	77	2A477133	1	Motor leg w/water line and driveshaft seal
26	286422-1	1	Tilt lock pivot	78	286169	1	Bearing, swivel bracket
27	1666	1	Bowed spring washer	79	197813	2	Bearing
28	429541	1	Tilt lock	80	1794	1	Spring pin
29	286451	1	Spacer, tilt lock	81	901307-2	1	Seal, driveshaft
30	286544-1	1	Spring, tilt stop	82	286414	1	Spring, leg water bracket
31	S286532	1	Stern bracket port w/clamp screw and foot	83	286347	2	Shock mount upper
32	392647	1	Carrying handle	84	286868	1	Spring, steering handle stop
33	424075	2	Handle, clamp screw	85	197813	2	Bearing, steering handle stop
34	A298073-1	2	Clamp screw w/foot	86	286490	1	Steering handle stop
35	8554	2	Spring pin	87	286080	1	Screw, steering handle pivot
36	8536	2	Spring pin	88	1807	1	Groove pin
37	66480	2	Stud clamp screw	89	1805	1	Spring pin
38	24074	2	Clamp screw foot	90	A286582	1	Steering arm w/spring pin
39	7005	1	Stop nut, 3/8 - 16	91	1502	2	Hex cap screw, 1/4 - 20 x 5/8
40	A286113	1	Lock bar w/handle and spring	92	8060	2	External tooth lockwasher
41	8540	1	Spring pin	93	286539	1	Bumper
42	286461	1	Spring, lock bar handle	94	447838	1	Magneto control shaft
43	286114	1	Lock bar handle	95	307818	2	Bearing
44	286019	1	Kingpin	96	1475	1	Fill hd screw, 10 - 24 x 1/2
45	1341	2	Hex nut, 1/4 - 20	97	286011	1	Washer, swivel bracket
46	286956	2	Bracket, shock mount lower	98	8538	1	Spring pin
47	A1844	2	Hex bolt, 1/4 - 20 x 2 3/8		392894-1	1	Steering handle indicator (not shown)
47A	8083	2	Spring lockwasher		392387	1	Decal, tilt release (not shown)
48	286244	1	Water line				

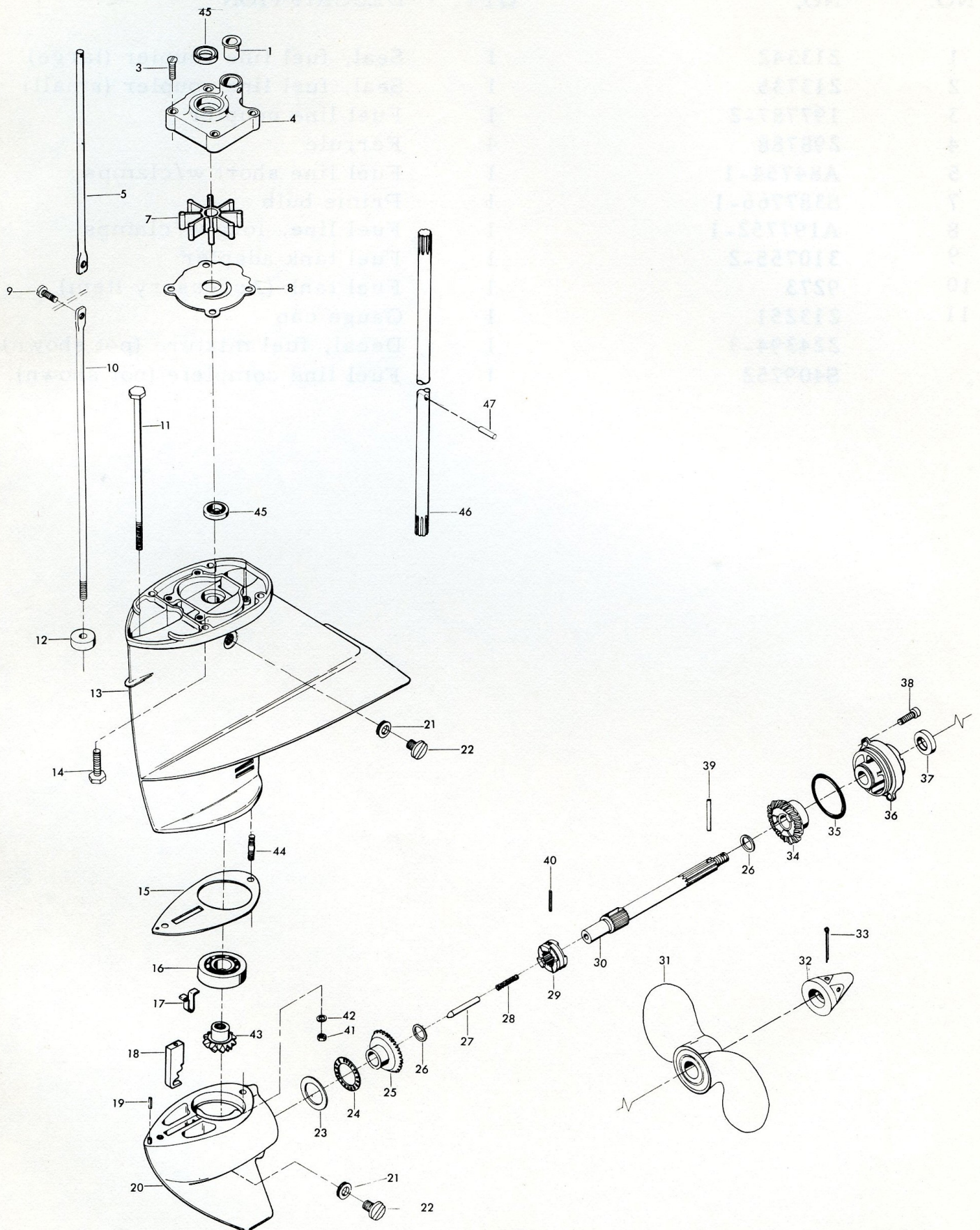
MOTOR LEG



Gear Housing

ILLUS. NO.	PART NO.	QTY.	DESCRIPTION
1	55914	1	Seal, inlet water line
3	1150	4	Flat hd screw, 1/4 - 20 x 1 1/8
4	A343060-1	1	Water pump body w/seal
5	286615	1	Gear shift rod upper
7	436065	1	Water pump impeller
8	341562	1	Water pump back plate
9	1976	1	Socket hd screw w/lockwasher, 10 - 24 x 1/2
10	286705	1	Gear shift rod lower
11	1800	1	Hex bolt, 1/4 - 20 x 7
12	286618-1	1	Seal, gear shift rod lower
13	A456554	1	Gear housing upper w/bearing, seal, plug and washer
14	430732	4	Hex hd screw, 1/4 - 20 x 1
15	286555	1	Gasket, gear housing
16	127910-2	1	Bearing bevel pinion thrust
17	286895	1	Spring cam detent
18	286721	1	Clutch shift cam
19	8553	1	Spring pin
20	A286054	1	Gear housing lower w/bearing, plug and spring pin
21	8077	2	Nyltite washer
22	50109	2	Gear housing plug
23	286903	1	Race, propeller shaft bearing
24	286901	1	Bearing, radial, propeller shaft
25	A456023	1	Bevel gear front w/bearing
26	456717	2	Thrust washer
27	286728	1	Clutch shift pin
28	409719	1	Clutch spring
29	A456521	1	Clutch
30	456098	1	Propeller shaft
31	P472	1	Propeller (Accessory Item)
32	A286094	1	Propeller nut w/cotter pin
33	1846	1	Cotter pin
34	A456662	1	Bevel gear rear w/bearing
35	286305	1	Seal, prop shaft bearing cage
36	A343298	1	Propeller shaft bearing cage w/bearing and seal
37	346118	1	Seal, propeller shaft
38	1802	2	Fill hd screw, 1/4 - 20 x 9/16
39	A324101	1	Propeller pin, pack of 3
40	1970	1	Spring pin
41	1490	1	Hex nut, 1/4 - 20
42	8063	1	Spring lockwasher
43	A286266	1	Gear, bevel pinion w/bearing
44	286008	1	Stud, gear housing rear
45	901307-2	2	Seal, water pump and driveshaft
46	343128	1	Driveshaft
47	901563	1	Water pump impeller drive pin

GEAR HOUSING



Fuel Tank and Line

ILLUS. NO.	PART NO.	QTY.	DESCRIPTION
1	213342	1	Seal, fuel line coupler (large)
2	213735	1	Seal, fuel line coupler (small)
3	197787-2	1	Fuel line coupler
4	298788	4	Ferrule
5	A84754-1	1	Fuel line short w/clamps
7	S387766-1	1	Prime bulb
8	A197752-1	1	Fuel line, long w/clamps
9	310755-2	1	Fuel tank adapter
10	9273	1	Fuel tank (Accessory Item)
11	213251	1	Gauge cap
	224394-3	1	Decal, fuel mixture (not shown)
	S409752	1	Fuel line complete (not shown)